



2025 GCE N Level Results

18 December 2025



Welcome back to Springfield!





**Congratulations on getting
through the long journey!**



Allow ourselves to take pride in
our accomplishments,
big and small



Celebrate



&





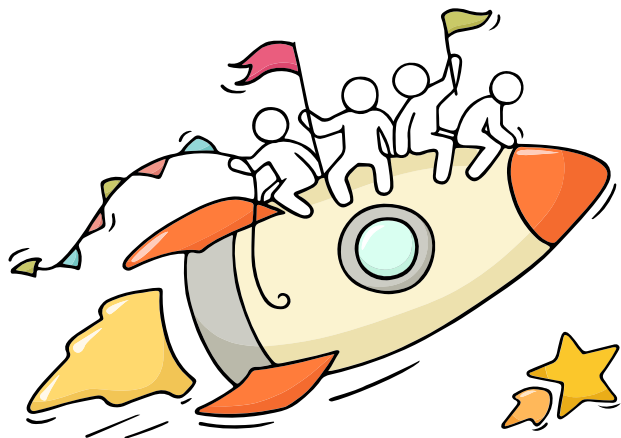
**THERE ARE MANY ROADS TO SUCCESS!
WALK YOUR OWN PATH!**



Administrative Briefing



You have worked hard to reach this stage. Let's celebrate your efforts!





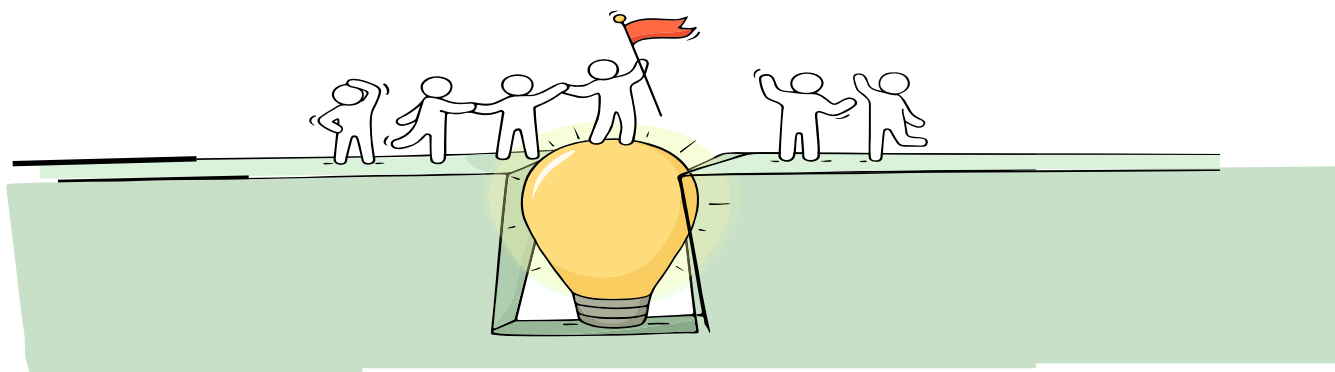
Resources to support you as you receive your results

Receiving your results and making decisions about your post-secondary pathways can be exciting to some, but stressful to others.

Scan this QR code for an infographic with some helpful resources to support you.



<https://go.gov.sg/2025nlevelstudentresource>





Thinking about Your Next Step?

Consider these questions...

In the infographic, you can find resources which can help you make **informed** decisions.



PLANNING YOUR NEXT STEP

These resources will help you chart your path ahead:



• What's Next Brochure

<https://go.gov.sg/whats-next-nlevel>



• Contact the ECG Centre @ MOE

<https://go.gov.sg/moe-ecg-centre>



• MySkillsFuture Student Portal

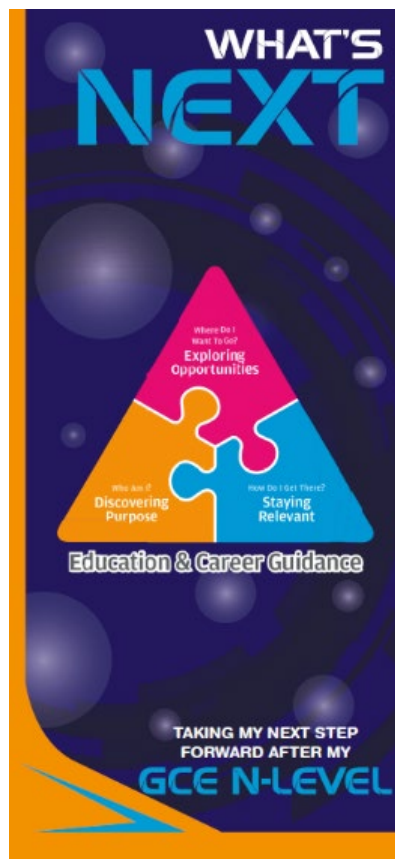
<https://go.gov.sg/MySFSec>



• Chat with your school's
ECG Counsellor







Resources to help you make informed decisions



PLANNING YOUR NEXT STEP

These resources will help you chart your path ahead:

	• What's Next Brochure https://go.gov.sg/whats-next-nlevel		• Contact the ECG Centre @ MOE https://go.gov.sg/moe-ecg-centre
	• MySkillsFuture Student Portal https://go.gov.sg/MySFSec		• Chat with your school's ECG Counsellor



MySkillsFuture Student Portal

Use the information and tools to explore various education and career pathways and take charge of your future.

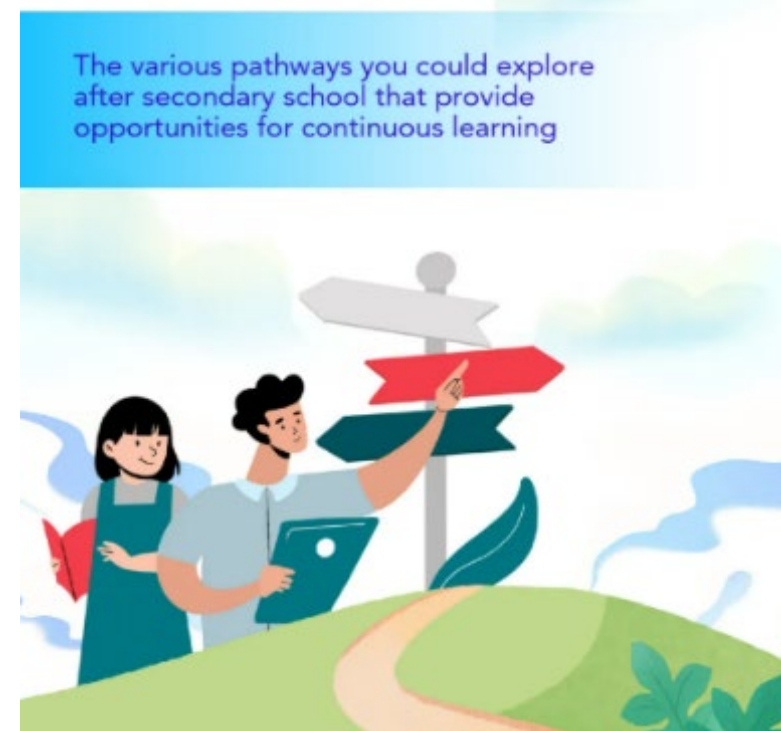
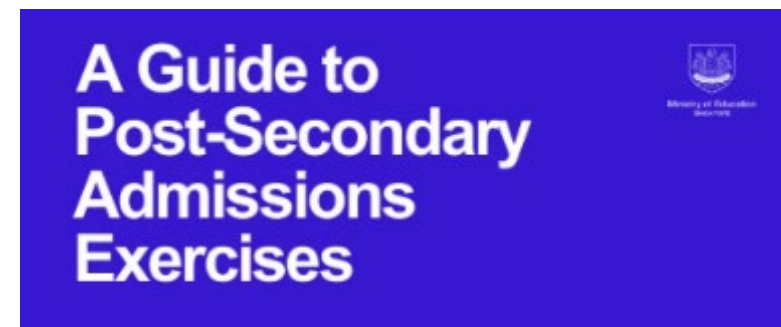


Resources to help you make informed decisions

You can find the details of the various admissions exercises in the **Post-Secondary Admissions Exercises booklet** that can be downloaded from:

<https://www.moe.gov.sg/post-secondary/admissions>

- Direct-Entry-Scheme to Polytechnic Programme (DPP)
- Polytechnic Foundation Programme (PFP)
- Joint Intake Exercise (JIE) 'N' / 'E'
- NAFA Foundation Programme (NFP)





Concerned about your next steps?

Stop

- **Calm** yourself down. Take a few deep breaths.

Think

- Think through the **different options** that are available for you. Keep things in perspective.
- Remember that the N-Level is ***one part*** of your life journey and **not the destination**.

Do

- Approach a **trusted adult** and seek his/her help. Have a conversation with this person about what would be best for you.
- **Make a decision** and **take action** based on your options.

When you receive your results, you may experience a range of emotions.

Managing these emotions well will allow you to stay calm and make rational decisions.



Reaching out for support is a sign of strength

If you have questions about your options or are not coping well, you can reach out to trusted adults such as a parent/guardian, teacher, School Counsellor or ECG Counsellor. You can also talk to a trusted friend.



Make an **appointment** to speak with your ECG Counsellor in school

OR

Make an ECG counselling appointment via the ECG Centre @ MOE

<https://go.gov.sg/moe-ecg-centre>

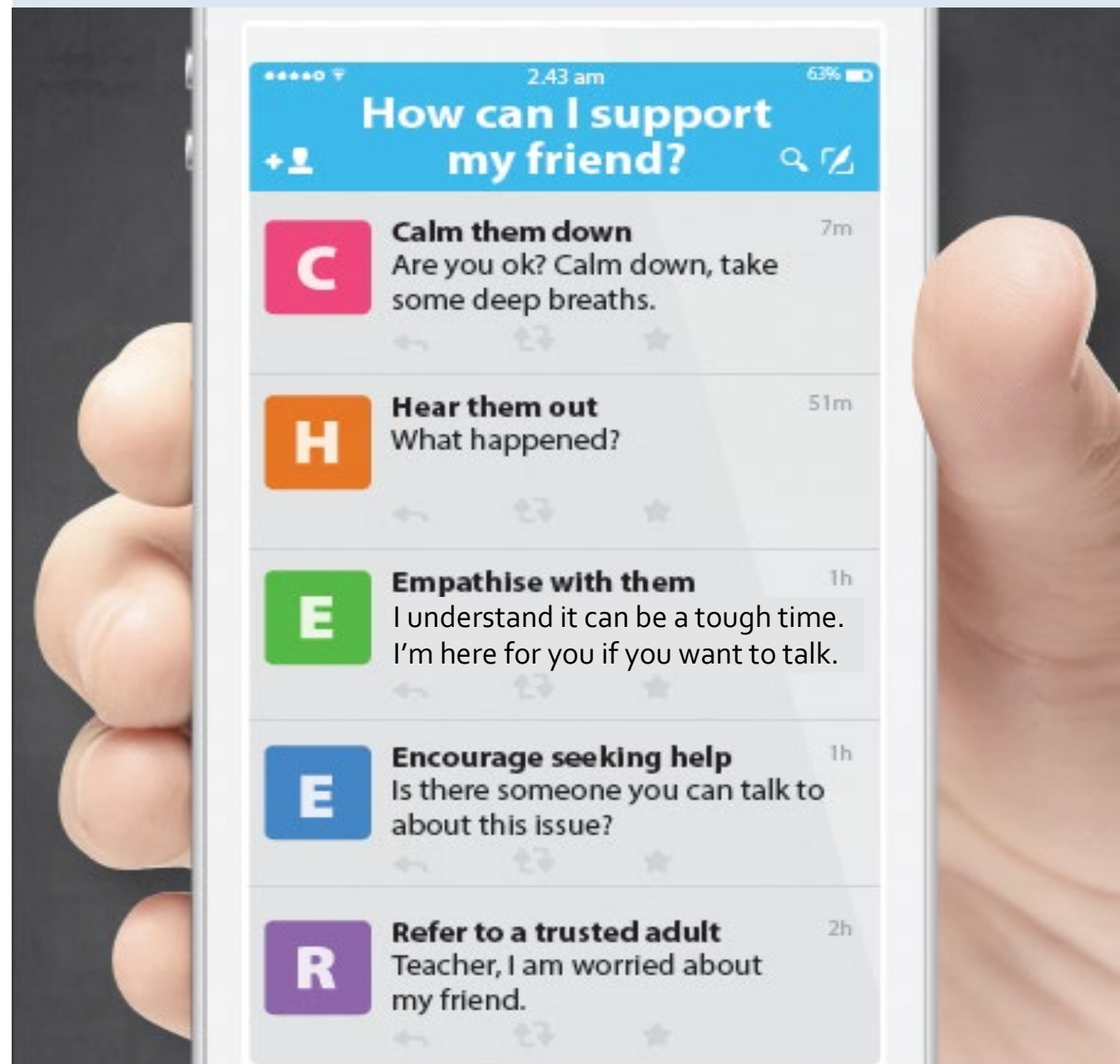




Keep a lookout for your friends in distress. You can support them in the following ways:

Supporting Your Friend

- We may each experience different emotions upon receiving the results.
- You can share your friends' joy by congratulating them.
- If your friends appear to be disappointed with their results, encourage them.
- Alert a teacher if you are worried for them.





Support is readily available for you.

There are **other hotlines** and **chats** available if you are **more comfortable** seeking help using these platforms. Scan the QR code below for a helpful resource.



SOS provides round-the-clock emotional support for those in distress, thinking of suicide or affected by suicide.

Call: **1767**
(24-hour helpline)

Whatsapp: **9151 1767**
(24-hour Care Text)

Community Health Assessment Team (CHAT)

provides personalised and confidential mental health checks and consultation for youths. To speak with a youth support worker, you can:

Visit: **CHAT Hub at *SCAPE, #05-05**

Call: **6493 6500/ 6501**

Email: **CHAT@mentalhealth.sg**

mindline.sg is an online platform that provides tools, tips and resources to help you manage your health and well-being. Find out more at:
www.mindline.sg



TOUCHline is a helpline to provide youths with emotional support and practical advice.

Call: **1800-377 2252**

Monday- Friday (Excluding Public Holidays):
9am – 6pm

Carey is an online platform by Care Corner that provides free mental health check-ins with mental health professionals. Find out more at: **<https://carey.carecorner.org.sg/>**

ec2 is an e-Counselling Centre where you can talk to a trained counsellor about the issues you are facing, right where you are.

Chat with a counsellor at:

www.ec2.sg

Monday – Friday (Excluding Public Holidays):
10am – 12pm & 2pm – 5pm



**The N-Level
examination is not
the destination.**

**It is part of your
education journey.**



Admissions Exercises


Things to note





ADMISSION & COURSE INFORMATION BROCHURE

FOR JANUARY 2026 JOINT INTAKE EXERCISE (JIE) FOR FULL-TIME COURSES



Institute of Technical Education



TAP INTO FUTURE-READY SKILLS

ADMISSION & COURSE INFORMATION
BROCHURE FOR JANUARY 2026
JOINT INTAKE EXERCISE (JIE)
FOR FULL-TIME COURSES


NOTE TO GCE 'N' LEVEL HOLDERS

Congratulations to all GCE 'N' Level holders for completing your secondary school education! You will receive a Form N, showing the list of full-time ITE courses you are eligible to apply based on your GCE 'N' Level results, through your school on the day when the 2025 GCE 'N' Level examination results are released, if you have sat for the examination as a school candidate.

Now you can begin your journey to a successful career by enrolling in ITE's post-secondary courses. With a wide range of courses to choose from, in Business & Services, Design & Media, Electronics & Info-Comm Technology, Engineering, Health Sciences and Hospitality, you can be certain of finding one that is right for you.

Application Details

To apply and find out more information about the ITE JIE, please scan the QR Code below:



For more information, log on to www.ite.edu.sg.
You can also contact us at 1800 2222 111 or training@ite.edu.sg.
© Institute of Technical Education, Singapore (2025).



Key Activity	Period for 3-Year and 4-year Higher Nitec courses	Remarks
1st Phase (Main Phase)		
Application	18 Dec 2025 (2.30pm) to 22 Dec 2025 (5pm)	Apply through the Internet at https://www.ite.edu.sg with SingPass.
Release of Results	26 Dec 2025	Check results at https://istudent.ite.edu.sg with web ID and password
Acceptance of Course Offer Period	26 Dec 2025 to 2 Jan 2026	Accept course offer at https://istudent.ite.edu.sg with web ID and password
2nd Phase (Late Application/Appeal Phase)		
Application	26 Dec 2025 to 2 Jan 2026	Apply through the Internet at https://istudent.ite.edu.sg with SingPass.
Release of Results	6 Jan 2026	Check results at https://istudent.ite.edu.sg with web ID and password
Acceptance of Course Offer Period	6 Jan 2026 to 9 Jan 2026	Accept course offer at https://istudent.ite.edu.sg with web ID and password
3rd Phase (Final Top-up Phase)		
Application	1 st Top-up Phase Application - 9 Jan to 16 Jan 2026 2 nd Top-up Phase Application - 22 Jan to 6 Feb 2026	Apply through the Internet at https://istudent.ite.edu.sg with SingPass.
Release of Results	1 st Top-up Phase - 12 Jan to 22 Jan 2026 2 nd Top-up Phase - 22 Jan to 11 Feb 2026	Check results at https://istudent.ite.edu.sg with web ID and password
Acceptance of Course Offer Period	1 st Top-up Phase - 12 Jan to 22 Jan 2026 2 nd Top-up Phase - 22 Jan to 11 Feb 2026	Accept course offer at https://istudent.ite.edu.sg with web ID and password



Information For Students on Key Dates for Jan 2026 intake

1. All N(A)*N(T) school leavers are encouraged to **submit** an application during the **1st Phase (Main Phase)** between **18 Dec 2025 (2.30 p.m.) to 22 Dec 2025 (5 p.m.)**. Application results for the 1st Phase will be **released** on **26 Dec 2025 from 9 a.m.**
2. If you wish to appeal, please **accept** the course offered **before** applying in the **2nd Phase (Late Application/Appeal Phase)** between **26 Dec 2025 to 2 Jan 2026**. The application results for the 2nd Phase will be known on **6 Jan 2025 from 9 a.m.**
3. Unsuccessful applicants can appeal under the **3rd Phase (Final Top-up Phase)** between **9 Jan and 16 Jan 2026 and 22 Jan to 6 Feb 2026** for courses with vacancies. The application results for the 3rd Phase will be known between **12 Jan and 22 Jan 2026** and **22 Jan and 11 Feb 2026**.

*N(A) students progressing to ITE

For further enquiries, N-Level school leavers can contact
ITE Hotline: 1800-2222-111

Key Pointers for Students on ITE's Joint Intake Exercise (JIE)

ALL students in N(T) and N(A) students (who are not progressing to 5N(A) or repeating 4N(A)) are eligible for JIE.
Those who were unsuccessful in EAE are also eligible for JIE.

Apply in the 1st JIE main phase in December.

Use all 12 JIE choices wisely, as competition for 3-year Higher Nitec courses is keen!

Do consult your teachers / ECG counsellors to help you make your choices!

Do use the Last Aggregate Score (LAS) published in ITE's admission portal to help you make your course choices.

You are eligible for Enhanced Foundation Programme (EFP) if you receive an invitation letter to the EFP addressed to you and a copy of invitation letter for your parent/guardian.

If you are eligible for EFP, make sure you apply for both the 4-Year and 3-Year Higher Nitec Course.

The EFP helps to build the necessary literacy and numeracy foundations!

If you are counter-offered a course, accept it first to secure a place in ITE, before appealing for another course you may be more interested in!





Online Application for


3-Year Higher Nitec Courses

4-year Higher Nitec Course with EFP
(for N(T) students with 0, 1 “N” pass)

1. Go to <https://www.ite.edu.sg>.

2. Click  icon.

3. Under JIE ‘N’, click  icon to link to the application website

Under JIE ‘E’, click  icon to link to the application website

4. At the application website:

- a) Use **your Singpass** to access the application portal.
- b) Upon completion of application, applicants will receive their **web ID** and **password**.

*Students who are eligible for the 4-Year Higher Nitec Course with EFP are encouraged to go through **both** JIE ‘E’ and JIE ‘N’ e-application process



Checking of Posting Results/Accept Course Offer

3-Year Higher Nitec Courses

4-year Higher Nitec Course with
EFP

(for N(T) students with 0, 1 "N" pass)

1. Go to <https://istudent.ite.edu.sg>.
2. Enter web ID and password.
3. Click '**Self-Service**' followed by '**Student Admission**' followed by '**View Application Results**' to view the application results and to accept course offer.

The above steps applies to all phases.
For more details, please refer to ITE website.



Additional Information For Students


Should you require further advice or assistance in your applications or future plans, please contact your teachers and/or ECG Counsellor.

For further inquiries, you may refer to the following hotlines and links for more information and advice on further education:

Institute of Technical Education (ITE)	
ITE Hotline (for ITE admissions and courses)	1800 2222 111 training@ite.edu.sg
ECG Centre @ MOE	
e-Appointment link	https://go.gov.sg/moe-ecg-centre

Additional Information For Students

The information listed in the table below will help you to make an informed decision on which choice of courses you could consider applying at ITE.

S/N	Information	Attachment/Link
1	ITE Factsheet 2025	<div>  <div>2025 JIEN Factsheet</div> </div>
2	ITE Course Booklet 2026	ITE-Course-Booklet-2025.pdf
3	Information on Progression Opportunities (From <i>Nitec</i> Courses to <i>Higher Nitec</i> and Technical diplomas)	https://www.ite.edu.sg/current-full-time-students/progression/
4	Information on Progression Opportunities (from <i>Higher Nitec</i> courses to diploma courses)	https://www.ite.edu.sg/secondary-school-students/admissions/academic-progression/academic-progression-from-full-time-higher-nitec/



Additional Information For Students

Should you require **further advice or assistance** in your applications or future plans, please contact your teachers and/or ECG Counsellor.

For **further inquiries**, you may refer to the following hotlines and links for more information and advice on further education:

Institute of Technical Education (ITE)	
ITE Hotline (for ITE admissions and courses)	1800 2222 111 training@ite.edu.sg
ECG Centre @ MOE	
e-Appointment link	https://go.gov.sg/moe-ecg-centre

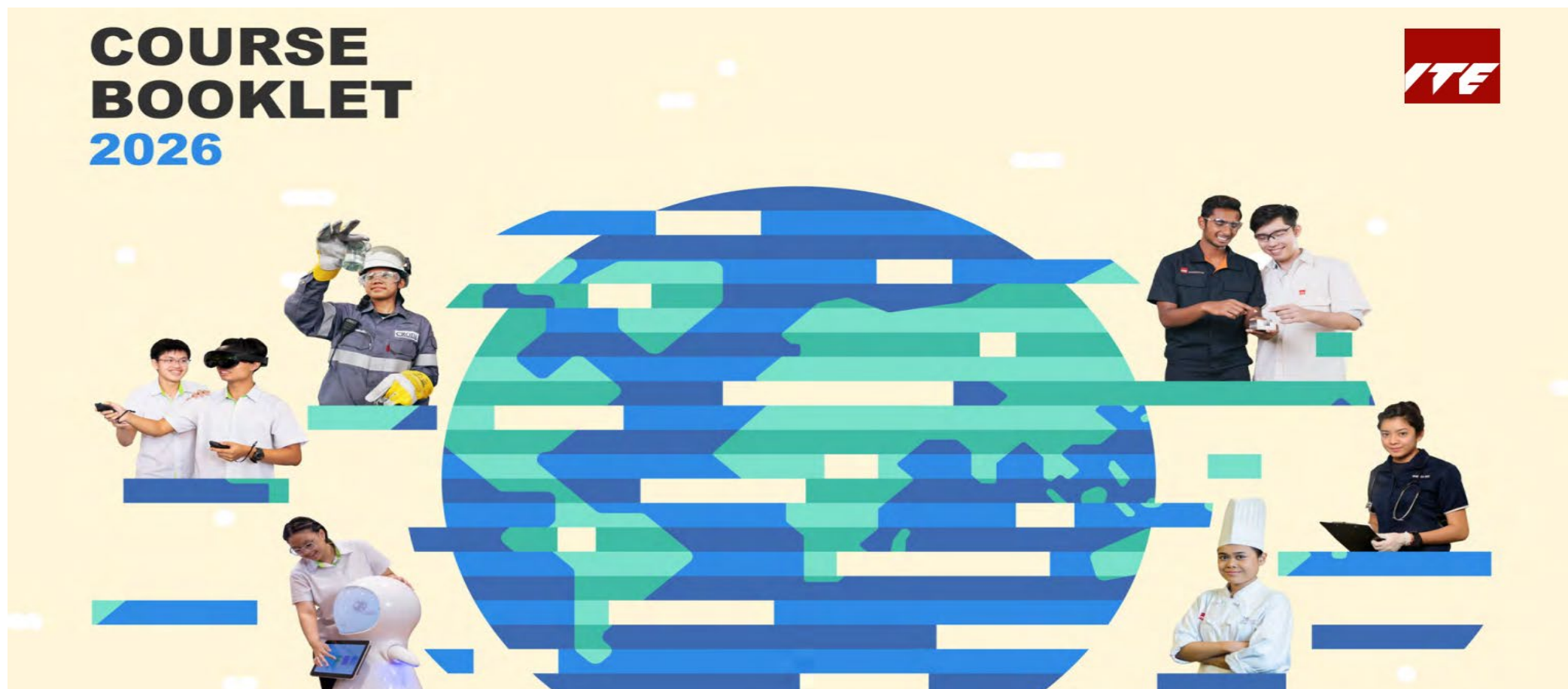


FACTSHEET

ITE 3-YEAR *HIGHER NITEC* AND 2-YEAR *NITEC* COURSES UNDER JANUARY 2025 PET INTAKE EXERCISE

- 1 For the January 2025 intake, ITE offered a total of 42 full-time 3-year *Higher Nitec*, 8 full-time 2-year *Nitec* courses and 2 Traineeship courses. The list of ITE full-time 3-year *Higher Nitec* / 2-year *Nitec* / Traineeship courses and their Minimum Entry Requirements (MERs) in the January 2025 intake are given at **Annexes A and B**.
- 2 Applicants for full-time courses were selected based on merit. The aggregate points of successful applicants for the respective 3-year *Higher Nitec* and 2-year *Nitec* courses for January 2025 intake are given at **Annex C**.
- 3 ITE will also phase out the final batch of 8 *Nitec* courses and in place, introduce 7 new 3-yr *Higher Nitec* courses in January 2026 intake. The list of new 3-year *Higher Nitec* courses (subject to approval from MOE) is given at **Annex D**. Course interview/aptitude test will also be removed for the following 3-year *Higher Nitec* courses:

3.1 3-year *Higher Nitec* in Nursing
3.2 3-year *Higher Nitec* in Aerospace Engineering
- 4 More information on ITE's full-time 3-year *Higher Nitec* and 2-year *Nitec* courses can be found at <https://www.ite.edu.sg/courses/full-time-courses/nitec-and-3-year-higher-nitec>. More information on ITE's Traineeship courses can be found at <https://www.ite.edu.sg/courses/traineeship-courses>.
- 5 Secondary schools are encouraged to use the information to advise their students on their choice of courses at ITE.



ITE Course Booklet 2026

<https://isomer-user-content.by.gov.sg/145/3a04e00a-1928-4a8a-bdd4-9b4631f49683/ITE%20Course%20Booklet%202026%20%281%29.pdf>



Information on:

Polytechnic Foundation Programme (PFP)

&

**Direct-Entry-Scheme to Polytechnic Programme
(DPP)**



Application for the Polytechnic Foundation Programme (PFP)

School candidates ***interested*** in applying for the PFP should first report to their secondary schools in 2026 to start their **Secondary 5** year, while awaiting notification of **eligibility** and **confirmation** of a place in the PFP.

Applications for the PFP will open in **January 2026**, on the day of the GCE Ordinary-Level (O-Level) Examinations results release. Candidates eligible for the PFP will receive a copy of **Form P** on the same day, inviting them to apply for the PFP.



POLYTECHNIC FOUNDATION PROGRAMME (PFP)

1. What is the PFP?

- A foundation year at the polytechnics that:
 - Prepares well-performing Sec 4N(A) students for entry into relevant polytechnic diploma courses
 - Serves as an alternative to Sec 5
- Conducted over two academic semesters at the polytechnics
- Students must pass all PFP modules in order to progress to a Diploma course.

2. Am I Eligible for PFP 2026?

You are eligible for the PFP if you:

- ☐ Sat for GCE N-Level exams as a school candidate in 2025
- ☐ Have obtained an ELMAB3 aggregate of 12 points or less (before deduction of CCA bonus points)
- ☐ Met subject-specific entry requirements as listed on the PFP portal

✓ **If you can check all 3 boxes above, you're eligible!**
(Note: Eligibility does not guarantee you a place in a PFP course)

If you had offered GCE O-Level examination subjects in 2025, you may refer to this table for the equivalent grade to compute your ELMAB3 aggregate:

GCE 'O' Level Grade	Converted Grade
A1-B3	1
B4-C6	2
D7	3
E8	4

3. How do I Apply?

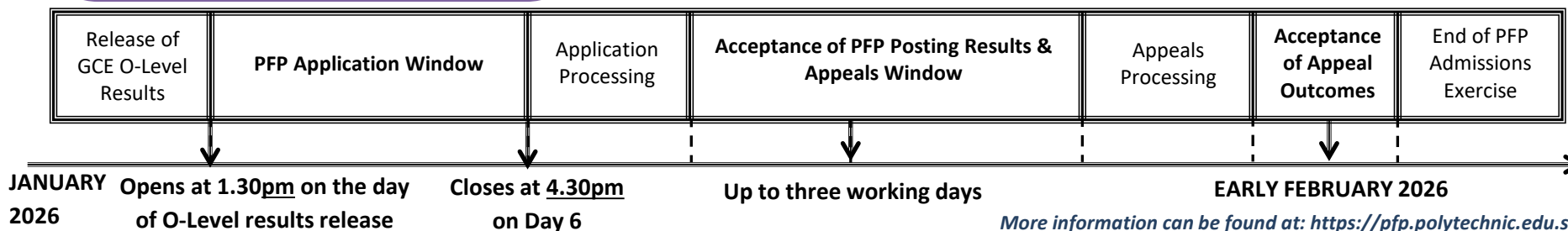
- Upon release of the GCE O-Level results, all PFP-eligible students will receive Form P to inform them of their eligibility to apply for the PFP at this [link](#) using their Singpass.
- You may select up to five course choices.
- Remember to provide updated contact details in your application to allow the polytechnics to contact you if necessary.
(Note: You should continue to attend Sec 5 from 2 January 2026 while applying for PFP.)

4. How Will I be Informed of the Outcome?

- You should log in to the PFP portal to check your application outcomes on the day of PFP posting results release.
- You will then have to indicate if you wish to accept/reject/appeal the offer.
- If you do not select any option, your offer will become invalid and you will be required to continue with your classes in Sec 5/DPP.
(Note: If your appeal is successful, your original offer will be voided, regardless of whether you accept the new PFP offer.)

5. What Happens Next?

- If you accept your offer, you will receive an enrolment package from the polytechnic in February/March 2026.
- The PFP year will start in April 2026.





Application for the Direct-Entry-Scheme to Polytechnic Programme (DPP)

- Under the DPP, candidates who successfully complete their Higher Nitec course and attain the **required minimum qualifying Higher Nitec GPA** are **guaranteed** a place in a polytechnic diploma course **mapped** to their Higher Nitec course.
- School candidates **eligible** for the **DPP** will receive a copy of **Form N** from their secondary schools, inviting them to apply for the DPP.
- Applications for the DPP can be submitted online via the **ITE application portal** between **2.30pm on Thursday, 18 December 2025** and **5.00pm on Monday, 22 December 2025**.



DIRECT-ENTRY-SCHEME TO POLYTECHNIC PROGRAMME (DPP)

1. What is the DPP?

- Prepares Sec 4N(A) students for progression into selected polytechnic diploma courses via a 2-year *Higher Nitec* programme at ITE, and a 10-week DPP preparatory course
 - Serves as an alternative to Sec 5
- DPP students who meet the minimum qualifying GPA score are guaranteed a place in a polytechnic diploma course mapped to the *Higher Nitec* course. (Refer to <https://jpae.polytechnic.edu.sg/app> for course mapping.)
- About 1,200 places offered across 18 *Higher Nitec* courses

2. Am I eligible for DPP?

- ☐ Sec 4N(A) student who has sat for GCE N-Level exams in 2025
- ☐ Obtained ELMAB3 aggregate of 19 points or less (before deduction of CCA bonus points)
- ☐ Meet course-specific entry requirements
- ☒ **If you can check all 3 boxes above, you're eligible!** (Note: Eligibility does not guarantee placement.)

If you have offered GCE O-Level examination subjects in 2025, you may refer to this table for the equivalent grade to compute your ELMAB3 aggregate:

GCE O-Level Grade	Converted Grade
A1-B3	1
B4-C6	2
D7	3
E8	4

3. How do I apply?

- Upon release of the GCE N-Level results, all DPP-eligible students may apply for DPP *Higher Nitec* courses via the ITE website (<https://www.ite.edu.sg>).
- You may select up to 12 course choices.
- Remember to provide updated contact details in your application so that ITE can contact you if necessary.

4. How will I know the outcome?

- You should check your DPP posting results online on the morning of the release of the DPP posting results.
- You will then have to indicate if you wish to accept/reject/appeal the offer.
- Your offer will be void if you do not accept the offer by the stipulated date. You will be required to continue with your classes in Sec 5, or with your *Nitec*/*Higher Nitec* course if your application via JIE 'N' is successful

5. What happens next?

Upon accepting your DPP offer, you will attend a 10-week DPP preparatory programme starting from Jan 2026.



December 2025

January 2026

Early February 2026



For more information on the DPP and the PFP, please visit these websites:

Direct-Entry-Scheme to Polytechnic Programme (**DPP**)
(<https://www.ite.edu.sg/secondary-school-students/ite-full-time-courses/higher-nitec-for-dpp/>)

Polytechnic Foundation Programme (**PFP**)
(<https://pfp.polytechnic.edu.sg/>)



To summarise



Information dates for intake activities

1. All N(A)/N(T) school leavers are encouraged to put in an application during the **1st Phase (Main Phase)** from Thurs **18 Dec 2025 (2.30pm)** to **Mon 22 Dec 2025 (5pm)**.
2. **Application results** for the 1st Phase will be released on **Fri 26 Dec 2025 (9 am)**.
3. **Acceptance** of Course Offer Period is from **Fri 26 Dec 2025** to **Fri 2 Jan 2026**. Do remember to **accept** the offer using your **web ID** and **password**. Failing which, the offer will **lapse**.
4. Report at your posted College on **Mon 12 Jan 2026**.



Internet application, acceptance of offer and appeal

- Application is **5 calendar days**: 2.30 pm on Thurs 18 Dec 2025 to **5 pm** on Mon 22 Dec 2025.
- Get ready the **12** preferred courses and Colleges. The system will time-out in **10 min**.
- **Check** through your choices (e.g. courses that need interview.....).
- Click '**SUBMIT**'.
- Click '**YES-SUBMIT**' to confirm and submit your application.
- You will see on the screen a **verification slip** with the choices you have made and **your web ID** and **password**.
- Click '**PRINT**' at the **bottom** of the page to print a copy of the verification slip for your reference / or take a **screen capture**.
- You will **need** your **web ID** and **password** to view the result of your application.



Internet application, acceptance of offer and appeal

- You will need **your web ID** and **password** to view the result of your application.
- You are allowed to make changes to your application only **ONCE** over the internet.
- For subsequent changes, please call or email to any of the Customer & Visitor Centre of ITE Colleges.

Note:

If you ***encounter any difficulties*** with your application over the Internet, please call or email to any of the Customer & Visitor Centre of ITE Colleges.

- ITE website: <https://www.ite.edu.sg>
- ITE Hotline (for ITE admissions and courses): **1800 2222 111**



2026 Sec 5



Criteria for Sec 5N Promotion

- (a) **ELMAB3** (English Language, Mathematics and best three other subjects) and aggregate score of **19 points or less**; and
- (b) At least an **N(A)-level grade 5** for **all subjects** used in the computation of ELMAB3.



If you are eligible for promotion to Sec 5N:

- Your Form Teacher will issue you with the Application Form.
- Indicate Humanities & Course work subjects clearly in the application form.
- All application forms must be submitted by **Mon 22 Dec 2025 (5.00 pm).**
- Late submission will not be considered.



If you are eligible for Sec 5N but have some discipline or related issues,

- Your Form Teacher will inform you personally.
- You will be issued the **Application Form** and the **'Letter of Undertaking'** form.
- Report to **Area 8 – Interview Panel Counter**.
- The completed undertaking form must be submitted to your **Form Teacher in 2026** on first day of school next year which will be Friday, **2 Jan 2026**.



Collection Procedures

- You will be attended to according to **class index number**.
- Collect the following from your Form Teacher:
 - Result slip and Certificate (original),
 - **ITE Information Course Brochure**,
 - Relevant application forms
- **Sign** to **acknowledge** receipt of documents.
- Check that your name is printed correctly on your result slip and certificate.



Important Reminders

- If you are not properly attired (e.g. coloured hair etc), you will be served last.
- Wait patiently for your turn to receive your results.
- Feel free to consult any of the teachers on the courses you are interested in.
- Need some advice on the course options or progressing to Sec 5N? Proceed to the **ECG Booth** to see **Ms Kathrine Yang**.



Springfield Student Portal - N-level Results Release

Important Reminder for ALL Students: Go through BOTH Results & Form N thoroughly For students who do NOT [sites.google.com](https://sites.google.com/view/springfield-student-portal/ecg/n-level-results-release)

<https://sites.google.com/view/springfield-student-portal/ecg/n-level-results-release>

Includes:

- some reminders
- links to the various admissions exercises
- aggregate calculator
- appointment booking links, etc.



2026 Sec 5N Posting Results:

- 2025 FTs will inform you on **Tuesday, 30 Dec 2025** (from 2.00 pm).

A festive graphic with the word 'Congratulations!' in a large, black, cursive font. The text is surrounded by several gold-colored stars of varying sizes and small gold dots, all set against a white background. The entire graphic is framed by a light green border.

Congratulations!